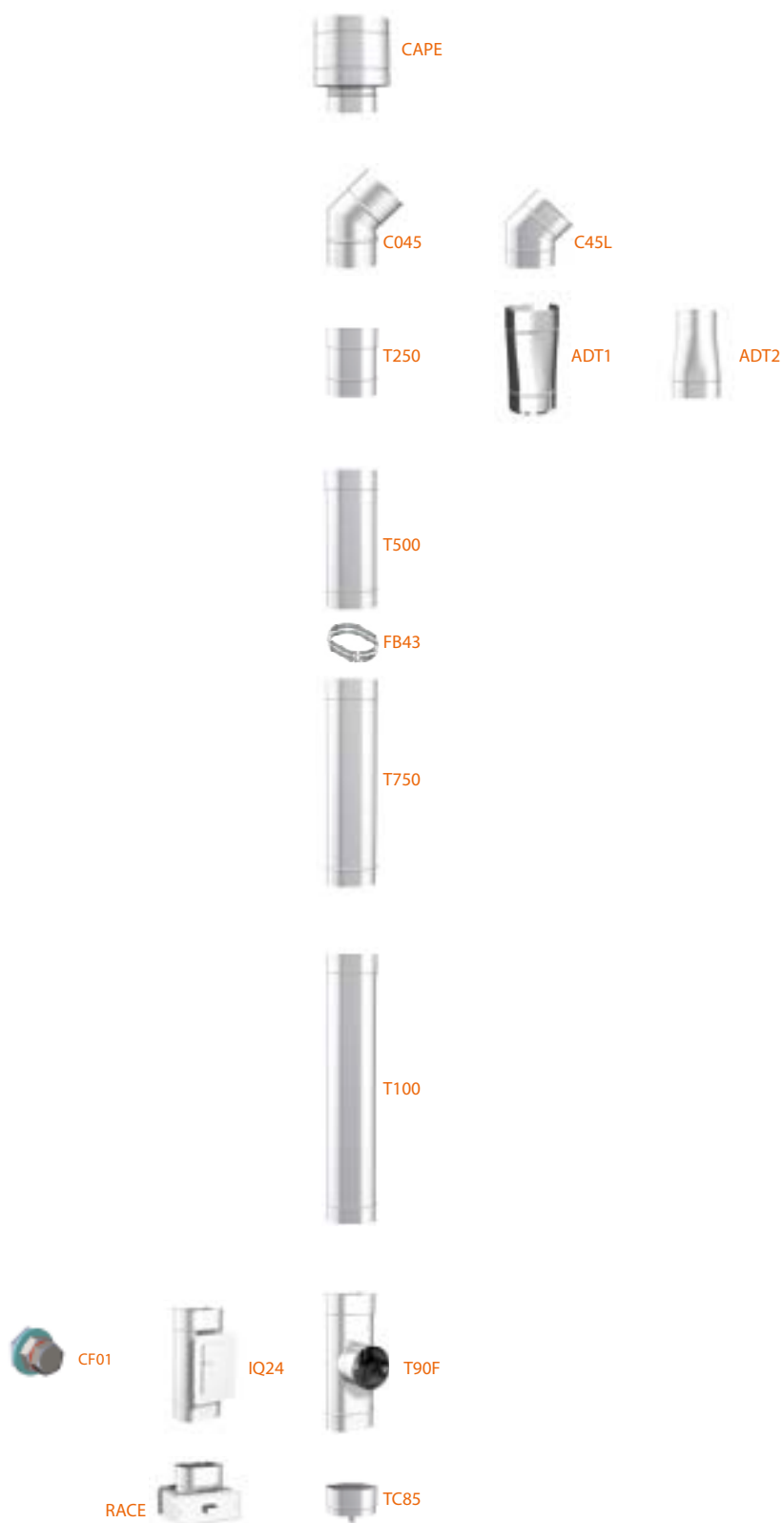
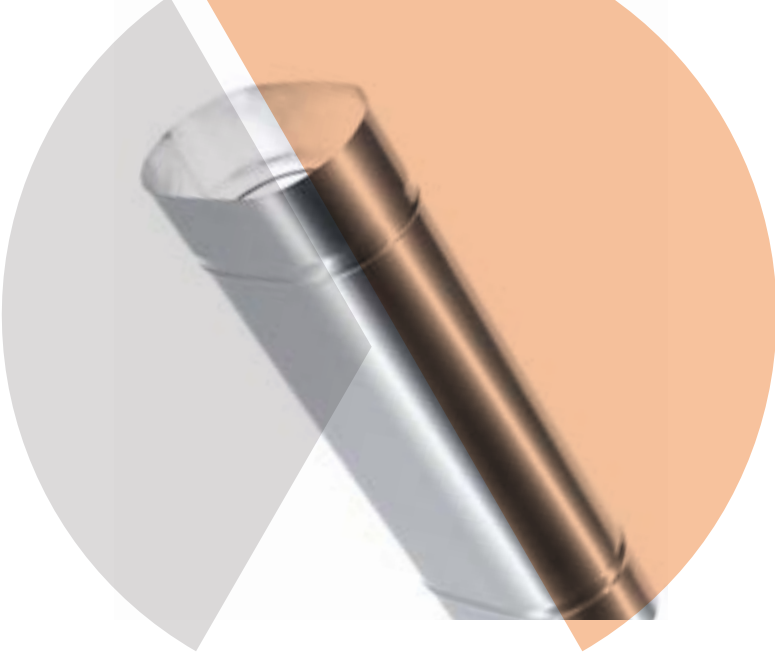


# Schema di montaggio

Assembly scheme  
Schéma de montage  
Esquema de montaje





EN 1856-2:2009  
No. 0432-CPR-00095-111

# OVAL

Canali da fumo e condotti ovali per uso interno in acciaio inox 444.

### PLUS e CARATTERISTICHE TECNICHE:

- sono adatti per l'intubamento o risanamento di cavedi e vani tecnici esistenti di sezione rettangolare
- spessore 0,5 mm
- temperatura di esercizio fino a 450 °C

Conduits de raccordement ovales pour utilisation intérieure, en acier inoxydable 444.

### AVANTAGES ET CARACTÉRISTIQUES TECHNIQUES :

- pour le tubage ou la rénovation de cheminées existantes et de compartiments techniques à section rectangulaire
- épaisseur 0,5 mm
- température de travail jusqu'à 450 °C

Oval connecting flue pipes for indoor, made of stainless steel 444.

### PLUS and TECHNICAL CHARACTERISTICS:

- they are suitable for ducting or renovating existing chimneys and technical compartments with a rectangular section
- thickness 0.5 mm
- working temperature up to 450 °C

Conductos de humos y conductos ovalados para uso interior en acero inoxidable 444.

### VENTAJAS Y CARACTERÍSTICAS TÉCNICAS:

- son adecuados para la canalización o renovación de cavidades existentes y compartimentos técnicos de sección rectangular
- 0,5 mm de espesor
- temperatura de funcionamiento hasta 450 °C

T450-N1-W-V2-L05050-G...

Ø disponibili  
Ø available  
Ø disponibles  
Ø disponibles

150-160-200 mm

Finiture disponibili  
Available finishes  
Finitions disponibles  
Acabados disponibles



INOX  
STAINLESS STEEL - ACIER INOX  
ACERO INOXIDABLE

F.08


● ● ● Mono e doppia parete

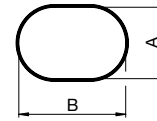
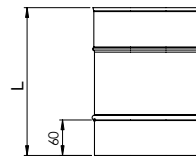
## T250

### Elemento lineare

Linear element - Élément droit - Elemento lineal

Finiture disponibili - Available finishes - Finitions disponibles - Acabados disponibles

F.08 - ACCIAIO INOX STAINLESS STEEL ACIER INOX - ACERO INOXIDABLE		A-B	Ø eq.	L	
OV1217T250		120x170	150	250	1
OV1219T250		120x190	160	250	1
OV1318T250		130x180	160	250	1
OV1324T250		130x240	200	250	1




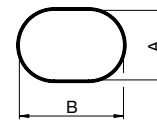
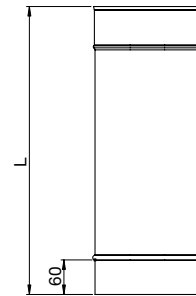
## T500

### Elemento lineare

Linear element - Élément droit - Elemento lineal

Finiture disponibili - Available finishes - Finitions disponibles - Acabados disponibles

F.08 - ACCIAIO INOX STAINLESS STEEL ACIER INOX - ACERO INOXIDABLE		A-B	Ø eq.	L	
OV1217T500		120x170	150	500	1
OV1219T500		120x190	160	500	1
OV1318T500		130x180	160	500	1
OV1324T500		130x240	200	500	1




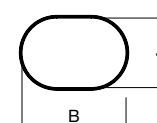
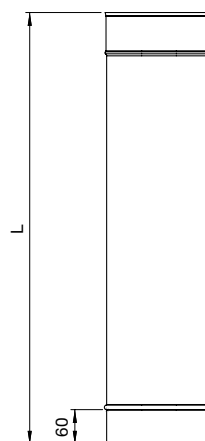
## T750

### Elemento lineare

Linear element - Élément droit - Elemento lineal

Finiture disponibili - Available finishes - Finitions disponibles - Acabados disponibles

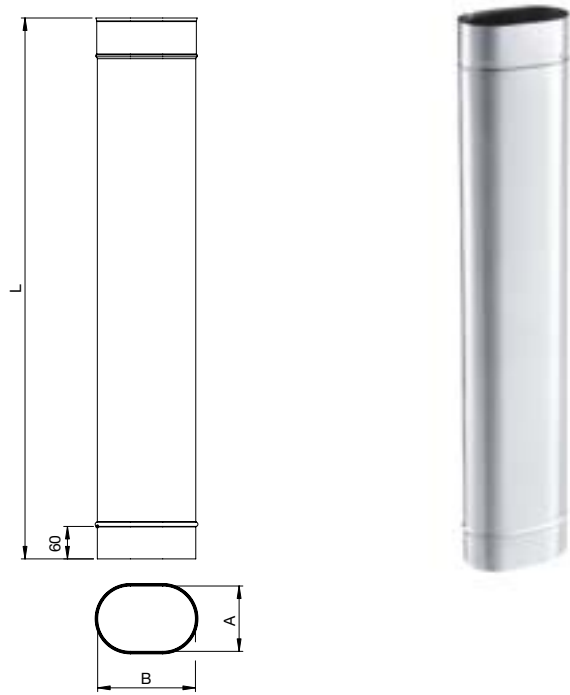
F.08 - ACCIAIO INOX STAINLESS STEEL ACIER INOX - ACERO INOXIDABLE		A-B	Ø eq.	L	
OV1217T750		120x170	150	750	1
OV1219T750		120x190	160	750	1
OV1318T750		130x180	160	750	1
OV1324T750		130x240	200	750	1



## T100

### Elemento lineare

Linear element - Élément droit - Elemento lineal



Finiture disponibili - Available finishes - Finitions disponibles - Acabados disponibles

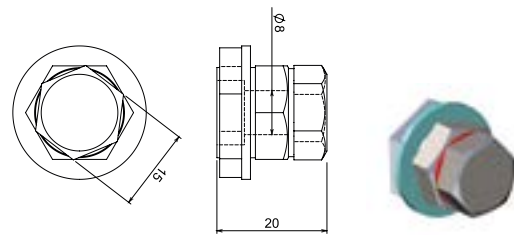
F.08 - ACCIAIO INOX STAINLESS STEEL ACIER INOX - ACERO INOXIDABLE		A-B	Ø eq.	L	
	OV1217T100	120x170	150	1000	1
	OV1219T100	120x190	160	1000	1
	OV1318T100	130x180	160	1000	1
	OV1324T100	130x240	200	1000	1

## CF01

### Tappo per analisi fumi

Fumes analyser cap - Bouchon pour l'analyse des fumées  
Tapón de análisis de gases de combustión

CODICE CODE - CODE - CÓDIGO		
	IUNVCF01	1



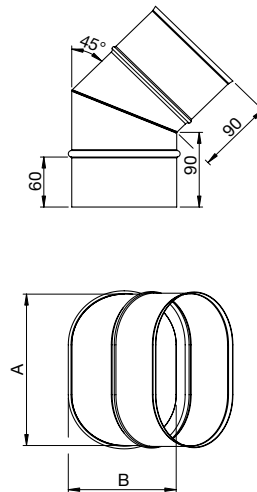
## C045

### Curva a 45° frontale

45° Frontal bend - Coude 45° frontal - Codo de 45° frontal

Finiture disponibili - Available finishes - Finitions disponibles - Acabados disponibles

F.08 - ACCIAIO INOX STAINLESS STEEL ACIER INOX - ACERO INOXIDABLE		A-B	Ø eq.	
	OV1217C045	120x170	150	1
	OV1219C045	120x190	160	1
	OV1318C045	130x180	160	1
	OV1324C045	130x240	200	1



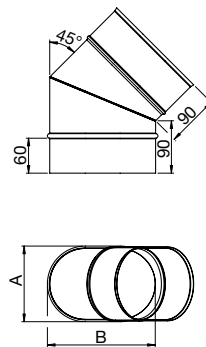
## C45L

### Curva a 45° laterale

45° Side bend - Coude 45° latéral - Codo de 45° lateral

Finiture disponibili - Available finishes - Finitions disponibles - Acabados disponibles

F.08 - ACCIAIO INOX STAINLESS STEEL ACIER INOX - ACERO INOXIDABLE		A-B	Ø eq.	
	OV1217C45L	120x170	150	1
	OV1219C45L	120x190	160	1
	OV1318C45L	130x180	160	1
	OV1324C45L	130x240	200	1

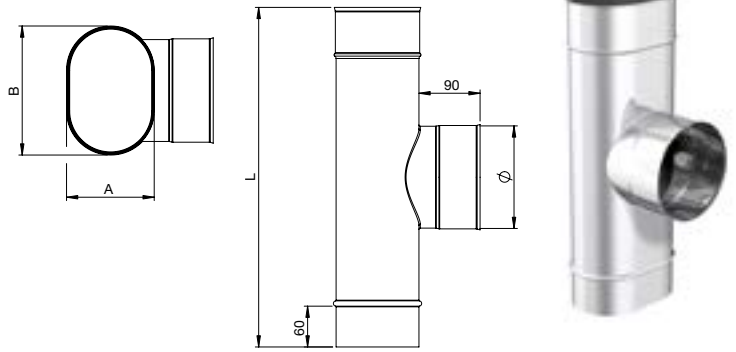


● ● ● Mono e doppia parete

## T90F

### Raccordo a "T" 90°

90° Tee pipe fitting - Té 90° - Racor en "T" 90°



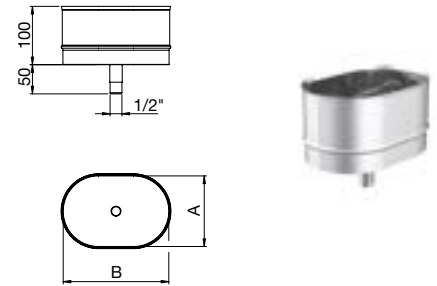
Finiture disponibili - Available finishes - Finitions disponibles - Acabados disponibles

F.08 - ACCIAIO INOX STAINLESS STEEL ACIER INOX - ACERO INOXIDABLE	A-B	Ø eq.	Ø	L	📦
OV1217T90F	120x170	150	150F	340	1
OV1219T90F	120x190	160	150F	340	1
OV1318T90F	130x180	160	150F	340	1
OV1324T90F	130x240	200	200F	390	1

## TC85

### Tappo raccogli condensa

Drain Tee cap - Tampon purge - Tapón de recogida de condensado



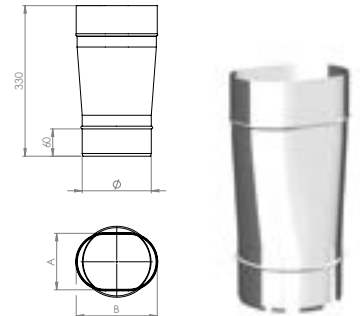
Finiture disponibili - Available finishes - Finitions disponibles - Acabados disponibles

F.08 - ACCIAIO INOX STAINLESS STEEL ACIER INOX - ACERO INOXIDABLE	A-B	Ø eq.	📦
OV1217TC85	120x170	150	1
OV1219TC85	120x190	160	1
OV1318TC85	130x180	160	1
OV1324TC85	130x240	200	1

## ADT1

### Adattatore da sezione tonda maschio a sezione ovale femmina

Adaptor from round male to oval female section - Adaptateur de section ronde mâle à oval femelle  
Adaptador de sección redonda macho de sección ovalada hembra



Finiture disponibili - Available finishes - Finitions disponibles - Acabados disponibles

F.08 - ACCIAIO INOX STAINLESS STEEL ACIER INOX - ACERO INOXIDABLE	A-B	Ø eq.	Ø	📦
OV1217ADT1	120x170	150	150M	1
OV1219ADT1	120x190	160	150M	1
OV1318ADT1	130x180	160	150M	1
OV1324ADT1	130x240	200	200M	1

## ADT2

### Adattatore da sezione tonda femmina a sezione ovale maschio

Adaptor from round female to oval male section - Adaptateur de section ronde femelle à oval mâle  
Adaptador de sección redonda hembra de sección ovalada macho



Finiture disponibili - Available finishes - Finitions disponibles - Acabados disponibles

F.08 - ACCIAIO INOX STAINLESS STEEL ACIER INOX - ACERO INOXIDABLE	A-B	Ø eq.	Ø	📦
OV1217ADT2	120x170	150	150F	1
OV1219ADT2	120x190	160	150F	1
OV1318ADT2	130x180	160	150F	1
OV1324ADT2	130x240	200	200F	1

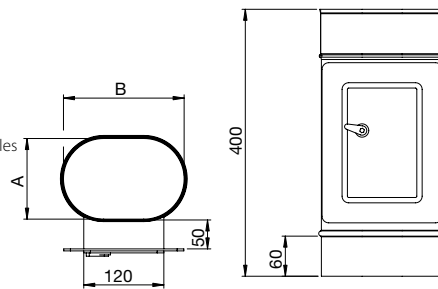
## IQ24

### Modulo raccolta incombusti

Unburnt materials collecting module - Module recueil suies  
Módulo de recogida de inquemados

Finiture disponibili - Available finishes - Finitions disponibles - Acabados disponibles

F.08 - ACCIAIO INOX STAINLESS STEEL ACIER INOX - ACERO INOXIDABLE	A-B	Ø eq.	
OV1217IQ24	120x170	150	1
OV1219IQ24	120x190	160	1
OV1318IQ24	130x180	160	1
OV1324IQ24	130x240	200	1



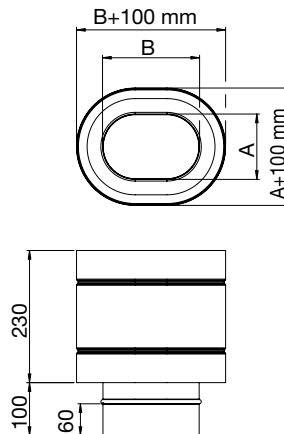
## CAPE

### Terminale a botte

Vedette cowl - Chapeau à tonneau - Terminal de barril

Finiture disponibili - Available finishes - Finitions disponibles - Acabados disponibles

F.08 - ACCIAIO INOX STAINLESS STEEL ACIER INOX - ACERO INOXIDABLE	A-B	Ø eq.	
OV1217CAPE	120x170	150	1
OV1219CAPE	120x190	160	1
OV1318CAPE	130x180	160	1
OV1324CAPE	130x240	200	1



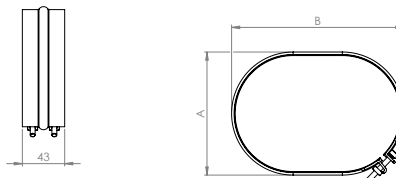
## FB43

### Fascetta di bloccaggio

Locking clamp - Bride de sécurité - Abrazadera de bloqueo

Finiture disponibili - Available finishes - Finitions disponibles - Acabados disponibles

F.08 - ACCIAIO INOX STAINLESS STEEL ACIER INOX - ACERO INOXIDABLE	A-B	Ø eq.	
OV1217FB43	120x170	150	1
OV1219FB43	120x190	160	1
OV1318FB43	130x180	160	1
OV1324FB43	130x240	200	1



## RACE

### Cassetta raccogli cenere

Ash collecting box - Récupérateur cendre  
Cajón para cenizas

Finiture disponibili - Available finishes - Finitions disponibles - Acabados disponibles

F.08 - ACCIAIO INOX STAINLESS STEEL ACIER INOX - ACERO INOXIDABLE	A-B	Ø eq.	C	D	
OV1217RACE	120x170	150	175	270	1
OV1219RACE	120x190	160	175	280	1
OV1318RACE	130x180	160	185	270	1
OV1324RACE	130x240	200	185	330	1

